

Package

www.fiberfox.co.kr

Mini 5C

Economical & High Performance



- 1 MINI 5C Splicer
- 2 Cleaver Pouch
- 3 MINI 50G Cleaver
- 4 Power Cord
- 5 USB Cable
- 6 AC Adapter
- 7 Car Cigar Jack
- 8 Cooling Tray
- 9 Spare Electrode
- 10 Connector Heater Block
- 11 Connector Holder
- 12 2 Battery Packs
- 13 Shoulder Strap
- 14 Operation Manual CD
- 15 Hand Carrying Case

* FTTH / STANDARD KIT : Different Standard Package * Car Cigarjack (Optional)

Specifications

Splicing Method	Economical & High Performance Core Alignment Splicer
Average Loss	SM(0.02dB) / MM(0.01dB) / DS(0.04dB) / NZDS(0.04dB) / G.657(0.02dB)
Return Loss	>>60dB
Splice Time	9s average SM / SM 7s Quick mode
Electrode Lifespan	>3,500 arcs
Applicable Fiber	SM(ITU-TU.625, MM(ITU-TU.651), DS(ITU-T.653), NZDS(ITU-T.655), G657A, G657B 0.25mm, 0.9mm, 2.0mm, 2.4mm, 3.0mm, FLAT(indoor cable)
Cleaved Length	Coating Diameter < 0.25mm = 8-16mm, Coating Diameter > 0.25mm = 16mm minimum
Coating Diameter	100-1,000um
Cladding Diameter	80-150um
Heating Programs	Factory installed mode : 9, User installable mode : 23
Heating Time	Typical 18s
Protection Sleeve	40mm, 60mm, SOC Connector
Data Output	HDMI
Splice Programs	Factory installed mode: 33, User installable mode: 70+
Splice Memory	Up to 2,000 records and 2,000 splice images
Battery	Typical 200 Cycles (Splice & Heat) / single battery / 2 Batteries Standard
Power Supply	AC 100-240V input or DC 9-14V
Monitor	Color 4.3" LCD monitor, with Touch Screen (Tempered Glass)
Cameras	2 CCD camera system
Magnification	XY style : 150 power, X/Y : 300 power
Fiber Display	X/Y or XY, single X.Y
Weight	1.39Kg (without battery)
Size	139mm X 123mm X 130 mm
Wind Protection	The max wind speed 15m/s
Operating Environment	Elevation 0-5,000 meters, -40-80°C, 0-95% relative humidity
Storage Condition	Temperature -40 to 80°C, 0-95% relative humidity, battery -20-30°C
Pull Test	1.96-2.25N (standard)



1.39kg

400 cycles

Economical & High Performance Core Alignment Splicer

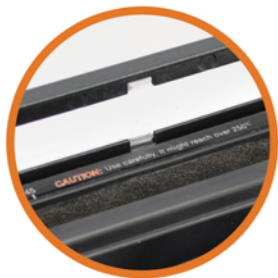


Copyright © 2013 FiberFox, Inc. All rights reserved.
 (Kwang Yi B/D) 80, Dongseo-daero 179beon-gil, Yuseong-gu, Daejeon 305-320, Korea
 Tel : +82-42-716-7221 / Fax : +82-42-716-7223 / E-mail : sales@fiberfox.co.kr

www.fiberfox.co.kr



Characteristic



Heating Time
- 18 sec <60mm sleeve>



Universal Holder (FTTH Kit)
- 250µm
- 900µm
- 2-3Ø
- Indoor



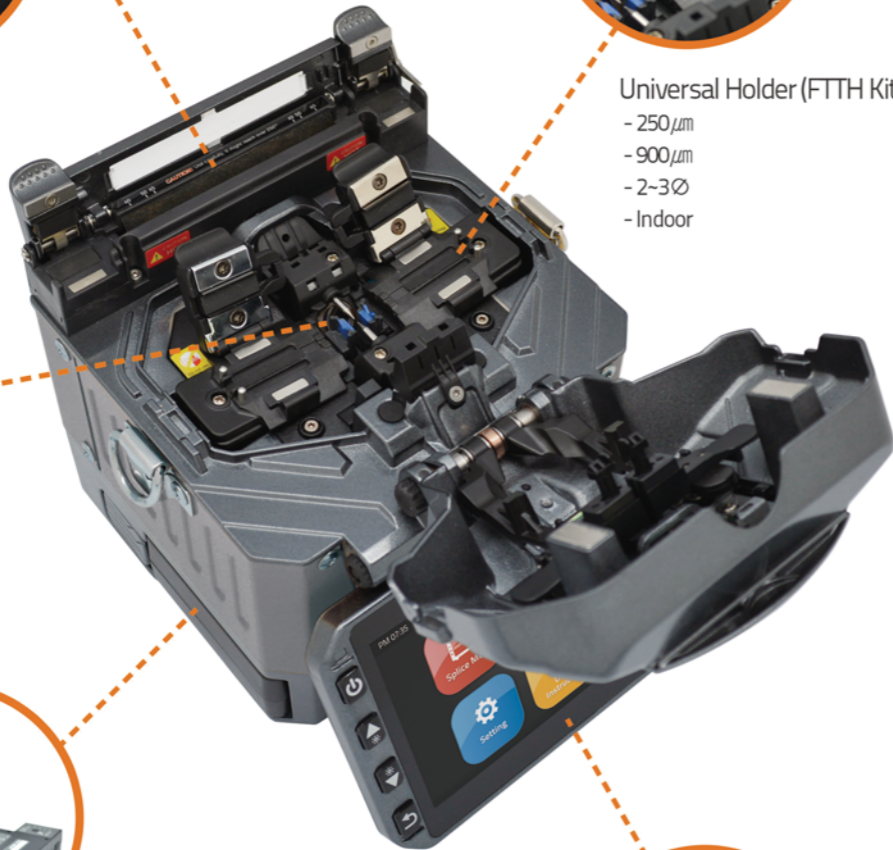
Applicable Cleaved Length
- Up to 5mm



Two Batteries are Included in Standard Package
- 5,000mA <Two Battery Standard>
- 200 cycles (splicing & heating) with one battery



Full Touch Screen
- GUI Interface
- Tempered Glass



01

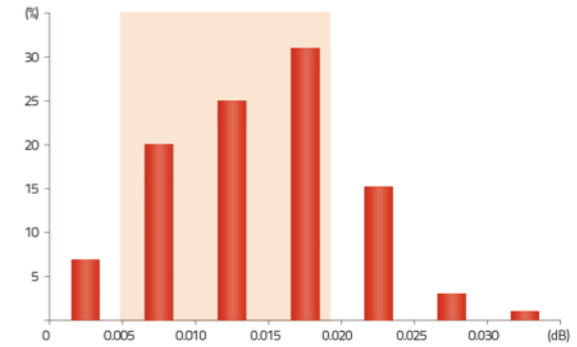
Compact & Light Core Alignment Splicer



02

Performance

The most stable loss condition
under different
environmental conditions



0.005 - 0.019dB : 75 (%)

03

Durability



Anti-shock



Dustproof



Waterproof

04

SOC Compatible

