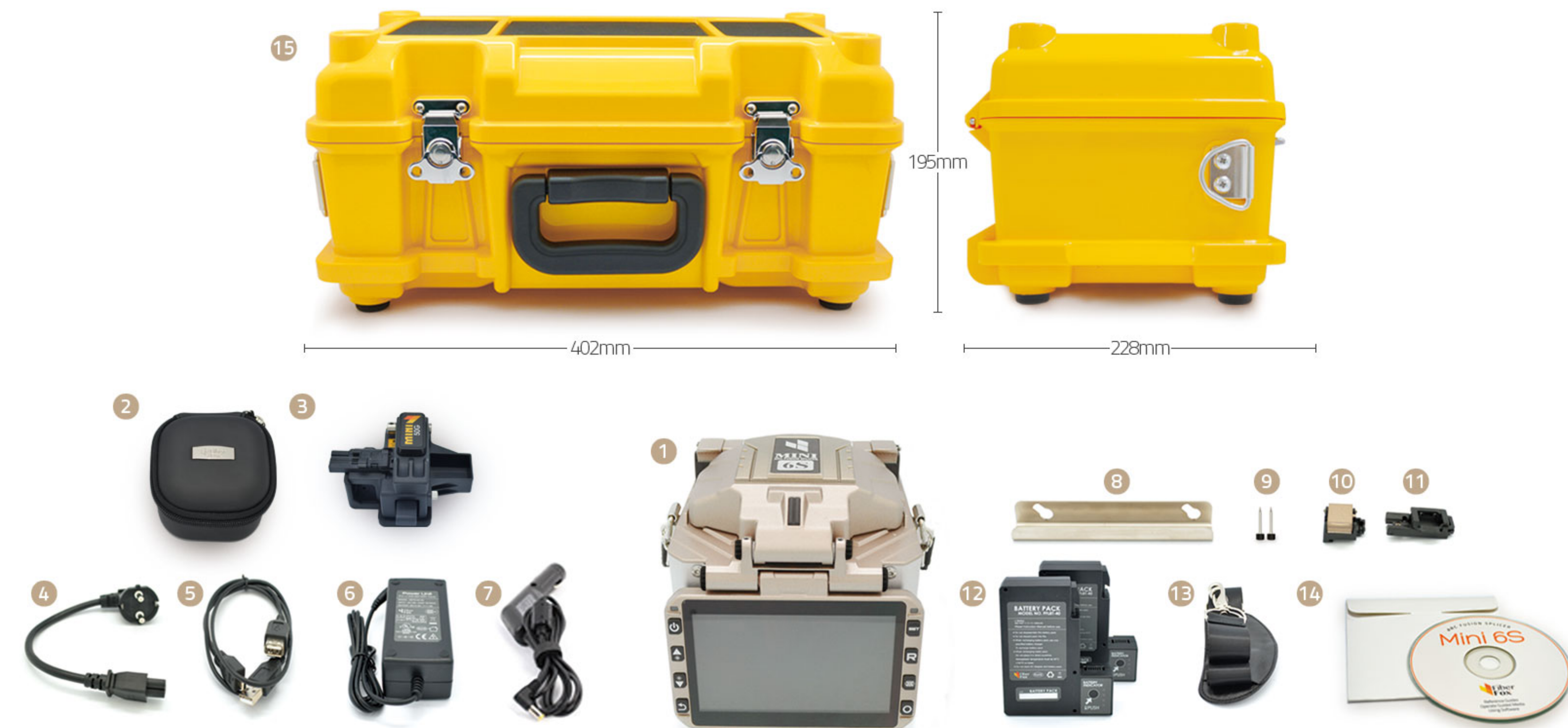


# Standard Package

www.fiberfox.co.kr

# Mini 6S

The Smallest Core Alignment Splicer



- 1 MINI 6S Splicer
- 2 Cleaver Softcase
- 3 MINI 50G Cleaver
- 4 Power Cord
- 5 USB Cable
- 6 AC Adapter
- 7 Car Cigar Cable
- 8 Cooling Tray
- 9 Spare Electrode
- 10 SOC Heater Block
- 11 SOC Holder
- 12 2 Battery Packs
- 13 Shoulder Strap
- 14 User Manual CD
- 15 Hand Carrying Case

## Specifications

Splicing Method	Core Alignment DWACAS(Digital Wavelength Automatic Core Alignment System)
Average Loss	<b>SM(0.02dB) / MM(0.01dB) / DS(0.04dB) / NZDS(0.04dB) / G.657(0.02dB)</b>
Return Loss	>>60dB
Splice Time	12s average SM / SM 7s Quick mode
Electrode Lifespan	>3,500 arcs
Applicable Fiber	SM(ITU-T G.652, MM(ITU-T G.651), DS(ITU-T G.653), NZDS(ITU-T G.655), IT-G657A, IT-G657B 0.25mm, 0.9mm, 2.0mm, 2.4mm, 3.0mm, FLAT(indoor cable)
Cleaved Length	Coating Diameter < 0.25mm = 8-16mm, Coating Diameter > 0.25mm = 16mm minimum
Coating Diameter	100-1,000um
Cladding Diameter	80-150um
Heating Programs	Factory installed mode : 11, User installable mode : 23
Heating Time	Typical 18s
Protection Sleeve	40mm, 60mm, SOC Connector
Data Output	Micro HDMI-USB master device
Splice Programs	Factory installed mode: 33, User installable mode: 70+
Splice Memory	Up to 2,000 records and 2,000 splice images
Battery	<b>Typical 200 Cycles (Splice &amp; Heat) / single battery &lt;2 Batteries Standard&gt;</b>
Power Supply	AC 100-240V input or DC 9-14V
Monitor	<b>Color 4.3" LCD monitor, with Touch Screen (Tempered Glass)</b>
Cameras	2 CCD camera system
magnification	XY style : 150 power, X/Y : 300 power
Fiber Display	X/Y or XY, single X.Y
Weight	<b>1.39Kg (without battery)</b>
Size	<b>122mm X 124mm X 138 mm</b>
Wind Protection	The max wind speed 15m/s
Operating Environment	Elevation 0-5,000 meters, -15-60°C, 0-95% relative humidity
Storage Condition	Temperature -40 to 80°C, 0-95% relative humidity, battery -20-30°C
Pull Test	1.96-2.25N (standard)



## The Smallest Core Alignment Splicer

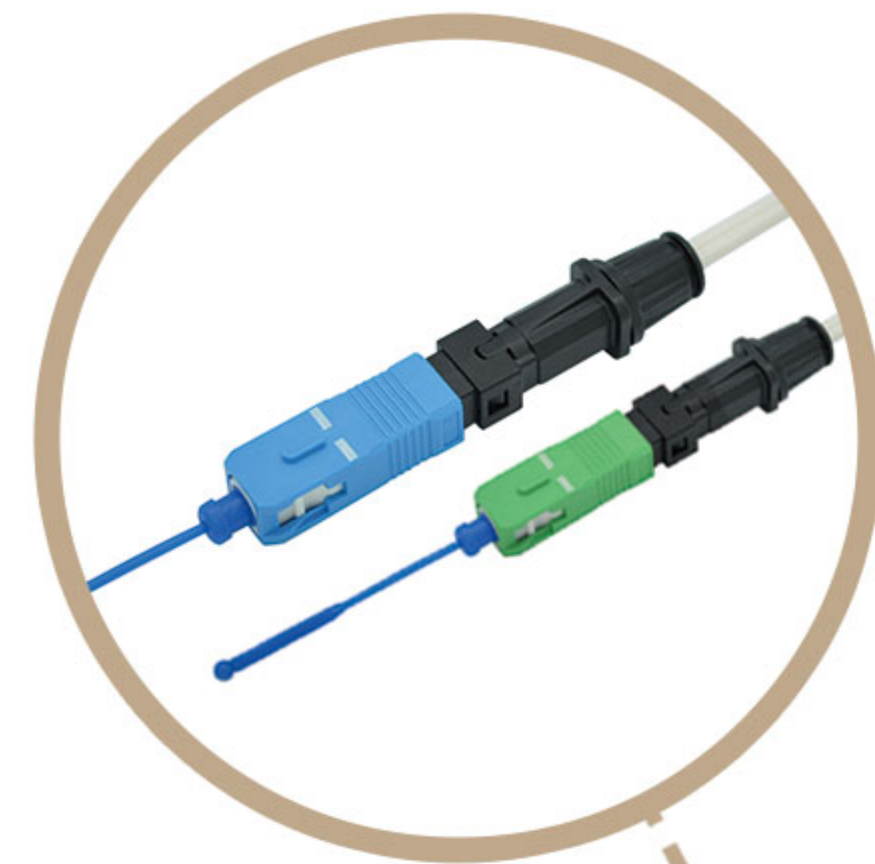
**1.39**  
kg

**400**  
cycles

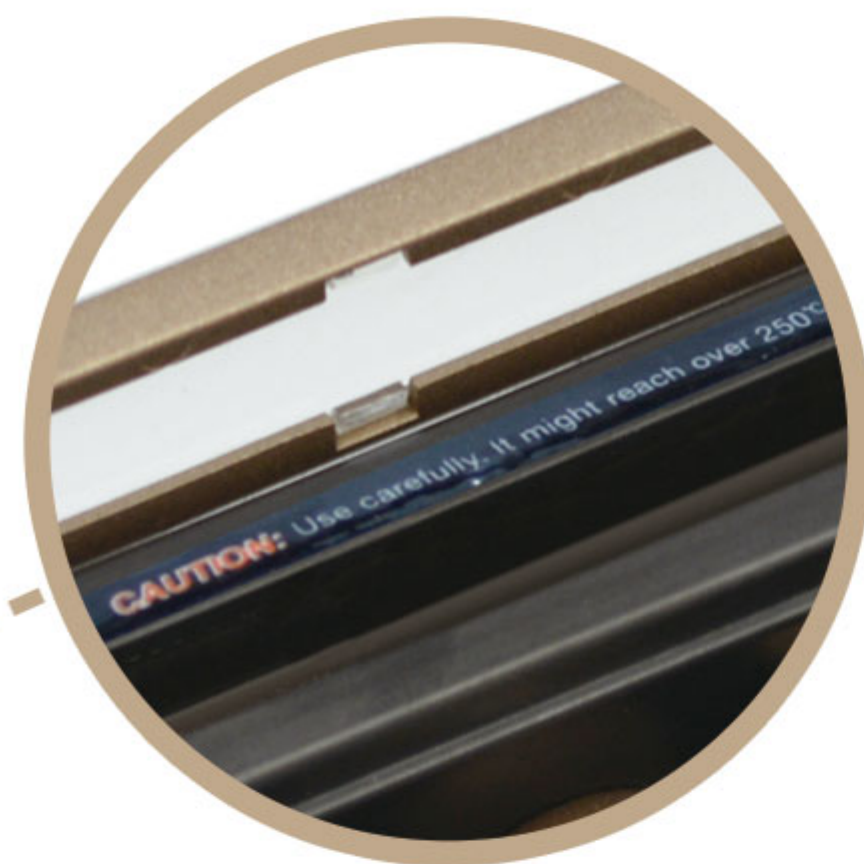
**7**  
sec

**0.01**  
dB

# Characteristic



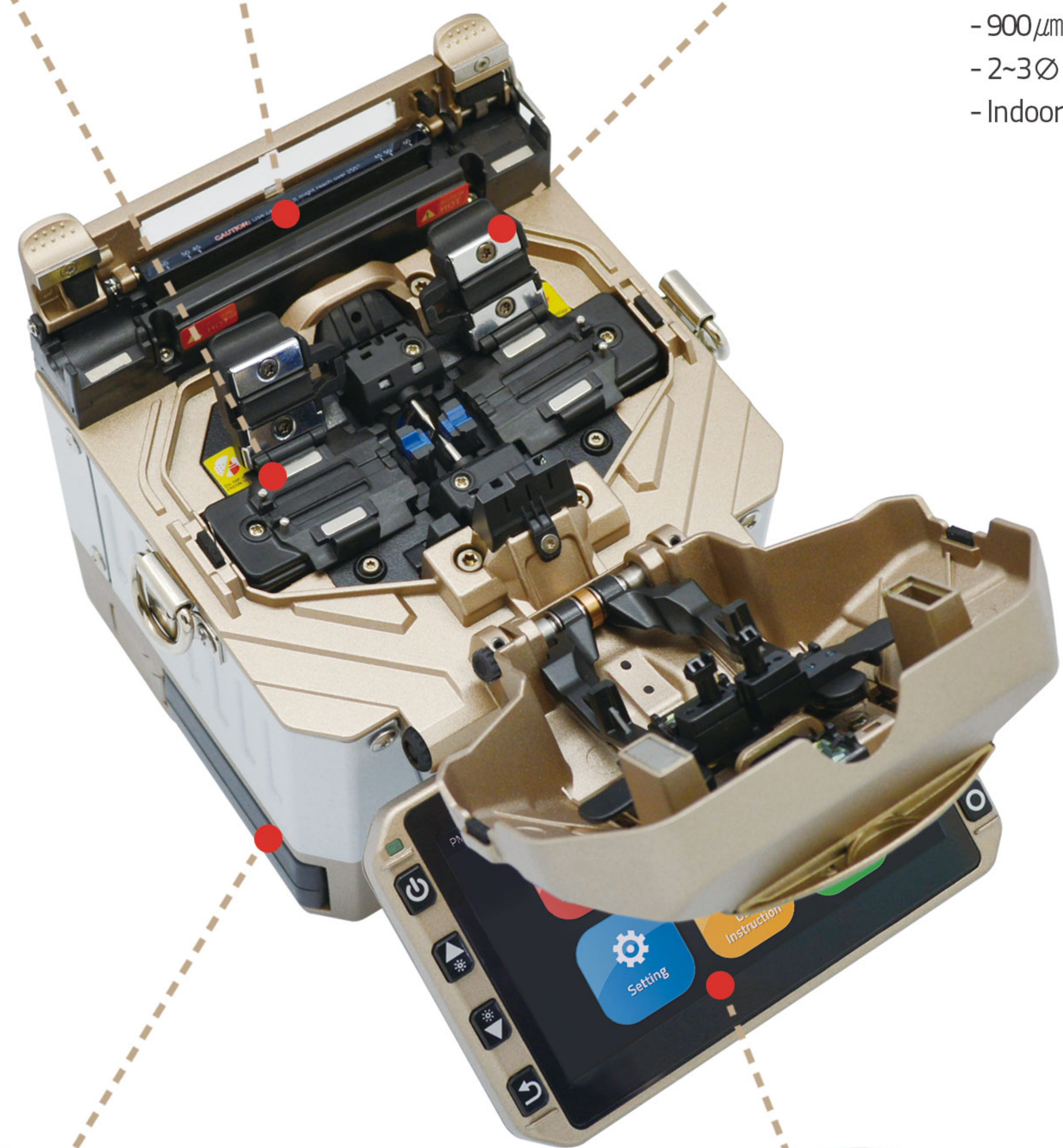
SOC Compatible



Heating Time  
- 18 sec <60mm sleeve>



Universal Holder  
- 250  $\mu$ m  
- 900  $\mu$ m  
- 2-3  $\varnothing$   
- Indoor



# Mini 6S

1.39kg  
(Without Battery)

122 x 124 x 138 mm



Two Batteries are Included in Standard Package  
- 400 cycles (splicing & heating) with Two Batteries

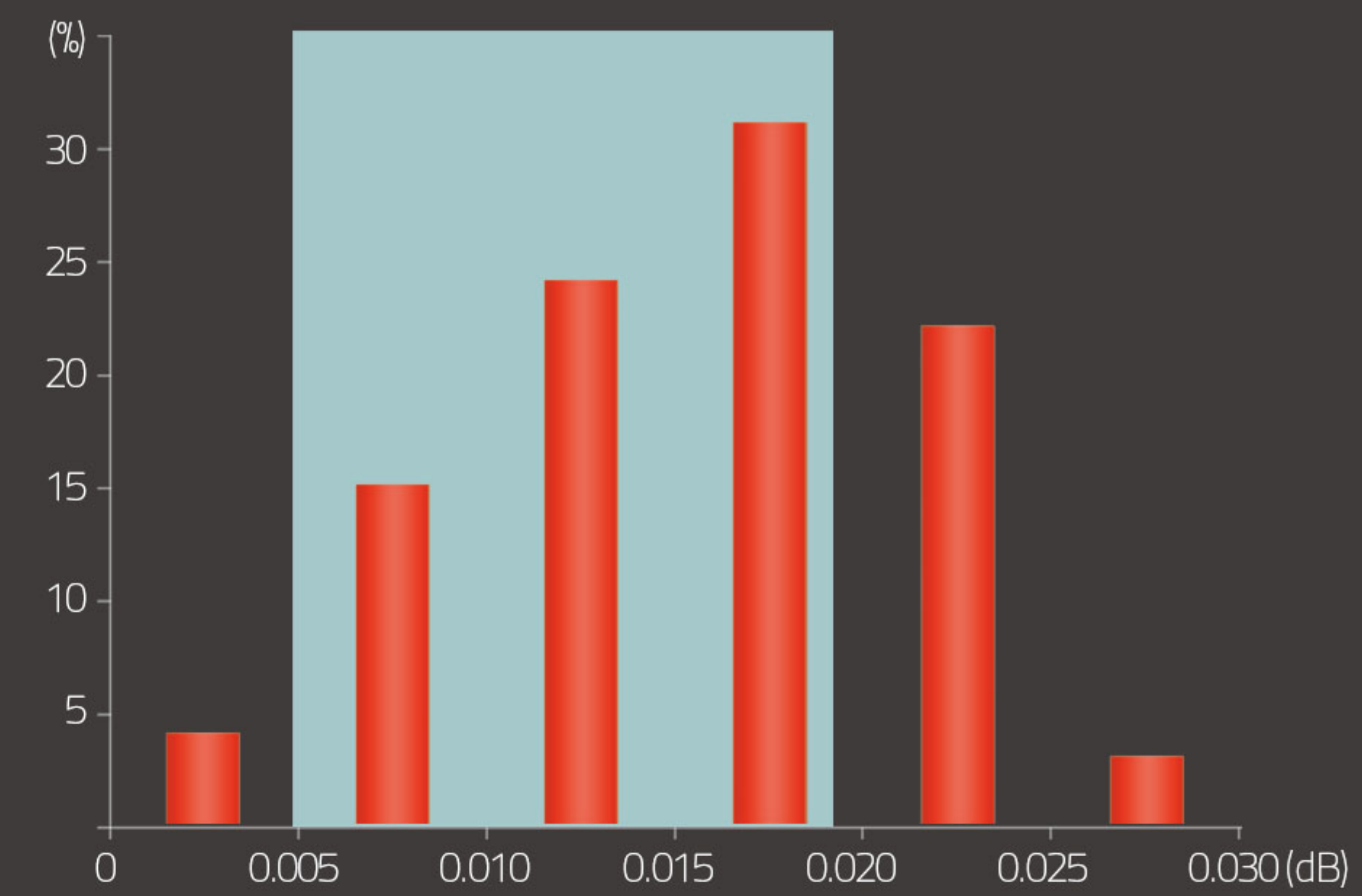


Full Touch Screen  
- GUI Interface  
- Tempered Glass

## 01

### Performance

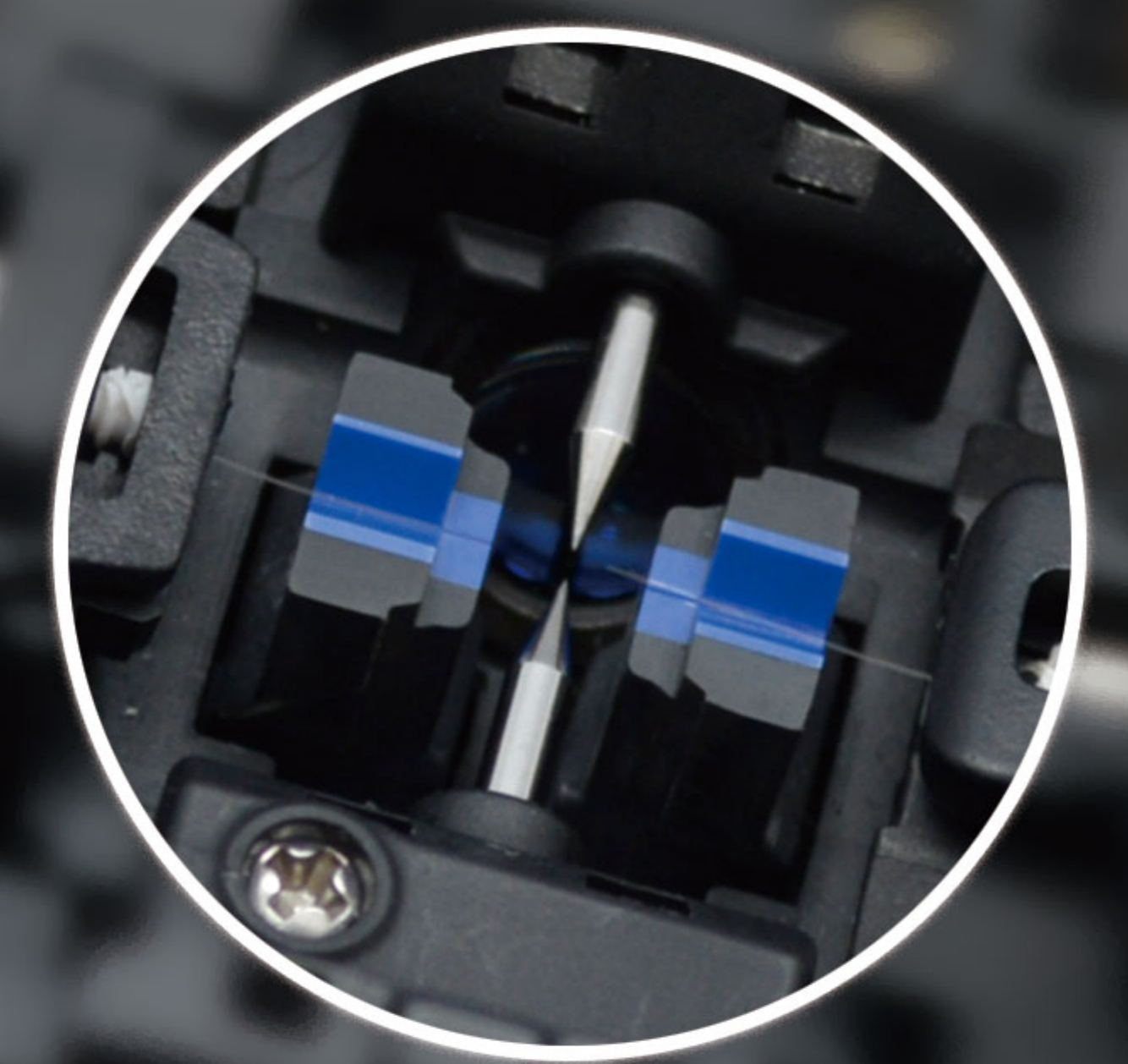
Guaranteed Stability and Splicing Performance



0.005 ~ 0.019dB : 80 (%)

## 02

### The Fastest Splicing Time



7sec  
with SM fiber

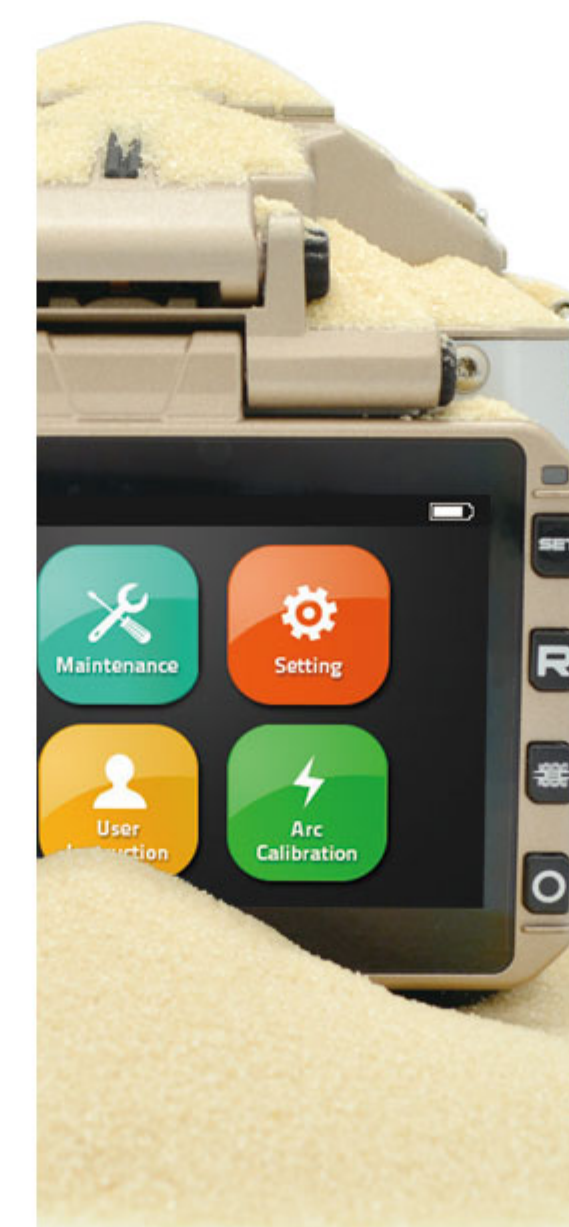
## 03

### Durability

1meter



Anti-shock



Dustproof

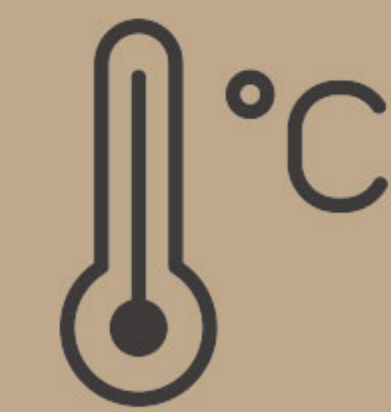


Waterproof

## 04

### Reliability

Perfect performance under any environmental conditions



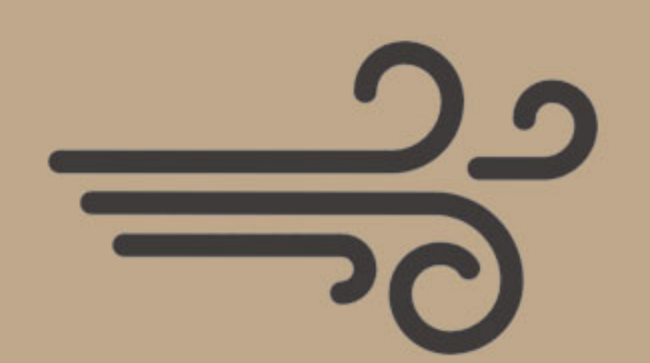
Temperature  
-15~60°C



relative humidity  
0~95%



Elevation  
0~5000meter



The max wind speed  
15m/s

Comply with IEC Standard